



MTX Plus API CJ-4/SN

MTX Plus API CJ-4/SN 15W-40 and 10W-30 Diesel Engine Oils

Represents the highest level of engine protection and performance specifications for modern diesel engines.

Diesel engines equipped with new Diesel Particulate Filter (DPF) and Exhaust Gas Recirculation (EGR) technology to meet the latest emissions mandates generate much more soot and run hotter than pre-2007 models, resulting in increased demands on engine oil that can result in abrasive wear, increased deposits, acids, sludge and viscosity breakdown. The API CJ-4 category of engine oils was developed to protect these engines.

MTX Plus API CJ-4/SN SAE 15W-40 and SAE 10W-30 Diesel Engine Oils exceed the requirements of API CJ-4 and are specifically designed to protect emission control systems, comply with emission standards, reduce engine wear, and control piston deposits and oil consumption. Fully backward compatible, they provide additional protection benefits to older engines operating on Ultra-Low Sulfur Diesel (ULSD) or Low Sulfur Diesel (LSD).

MTX Plus handles twice the soot of CI-4 oils and delivers far improved wear protection, deposit and oil consumption control, soot-related viscosity control, prevention of viscosity loss from shearing, used oil low-temperature pumpability, and protection from thermal and oxidative breakdown.

Performance Attribute

Performance Benefit

Patented Soot Dispersancy Technology

Keeps soot particles finely dispersed, resulting in reduced oil thickening and improved abrasive wear prevention. Offers twice the soot handling capability of CI-4 oils.

Heavily Fortified with Detergents

Built in reserve of long lasting detergent power. High TBN provides extra protection against corrosive acids that can damage engine hardware. Controls ring and piston deposits. Supports longer drain intervals and increases service uptime.

Shear-Stable, Viscosity Index Improver

Oil stays in-grade. Protects against viscosity breakdown due to shear.



ALLIED
OIL & SUPPLY, INC.

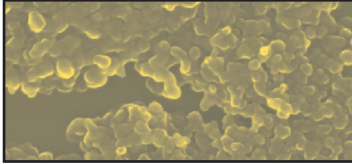
To find out more about our products and services, contact us at: (800) 333-3717 or visit www.alliedoil.com



MTX Plus API CJ-4/SN 15W-40 and 10W-30 Diesel Engine Oils

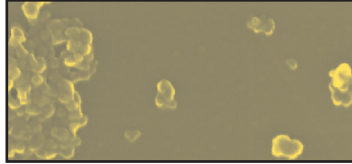
Patented Soot Dispersants Reduce Wear

Other Oil



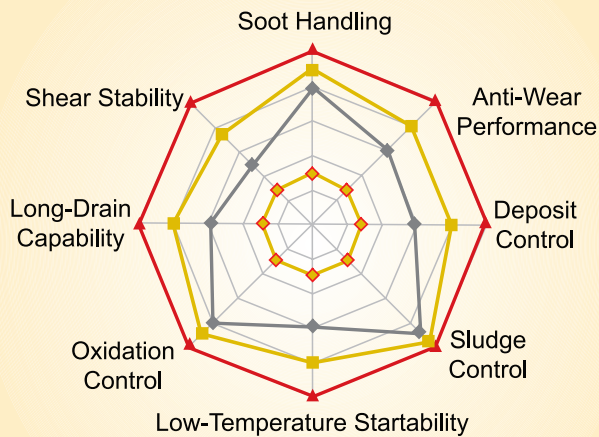
Without soot dispersant additives, soot clumps together, causing oil thickening that can cause reduced lubrication and abrasive wear.

MTX Plus 15W-40



MTX Plus diffuses soot into finer particles, resulting in reduced oil thickening and improved abrasive wear prevention.

Relative Performance Chart



API CI-4 MTX Plus DTX Plus SynTX

Performance Benefits:

- Protects Emission Control Systems
- Complies with EPA Emission Standards
- Handles Double the Soot of API CI-4 Oils
- Offers Greater Oxidation Protection
- High 10 TBN with Reserve Power
- Exceptional Protection Against Valve Train Wear and Bore Polishing
- Outstanding Protection Against Rust and Corrosion
- Protects Against Viscosity Breakdown
- Reduces Thermal Breakdown
- High Levels of Detergency Keeps Engines Clean
- Ideal for Mixed Fleets

Recommended for:

New diesel engines equipped with exhaust emission control systems, older diesel engines requiring improved protection. This lubricant excels in high demand, heavy-duty diesel applications.

Specifications/Approvals:

Recommended for diesel engines and, where appropriate, gasoline engines requiring any of the following specifications:

- API CJ-4, CI-4 PLUS, CI-4, CH-4, CG-4, CF, SN, SM and SL Performance
- Mack EO-O Premium Plus*, EO-N Premium Plus '03, EO-M Plus, EO-M
- Caterpillar ECF-3, ECF-2, ECF-1-a
- Cummins CES 20081*, 20077, 20076
- Detroit Diesel 93K218*, 93K215*, 93K214*
- MAN 3275*
- Mercedes Benz 228.31*
- MTU Type I, Type II*
- Volvo VDS-4*, VDS-3, VDS-2
- Global DHD-1
- JASO DH-2
- Renault RLD-3*
- ACEA E9-08, E7-04, E4, E2*
- Allison C-4*

15W-40 only

Typical Properties:

PROPERTY	METHOD	15W-40	10W-30
KV @ 100°C, cSt	ASTM D-445	15.6	11.9
KV @ 40°C, cSt	ASTM D-445	118.8	79
Viscosity Index	ASTM D-2270	138	186
HTHS Viscosity @ 150°C, cP	ASTM D-4683	4.2	3.52
MRV @ -25°C, cP	ASTM D-4684	23,700	
MRV @ -30°C, cP	ASTM D-4684		20,467
CCS Viscosity @ -20°C, cP	ASTM D-5293	6,087	
CCS Viscosity @ -25°C, cP	ASTM D-5293		6,296
Sulfated Ash, wt. %	ASTM D-874	0.99	0.99
Total Base Number	ASTM D-2896	10	10